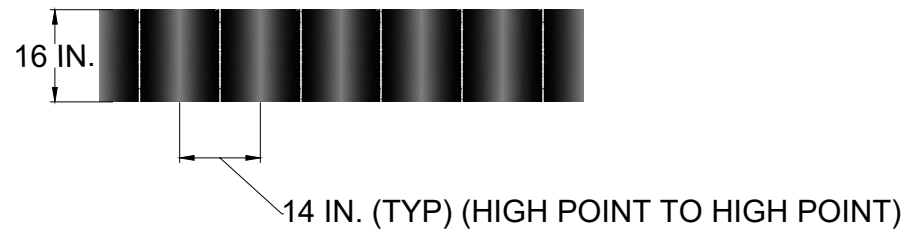
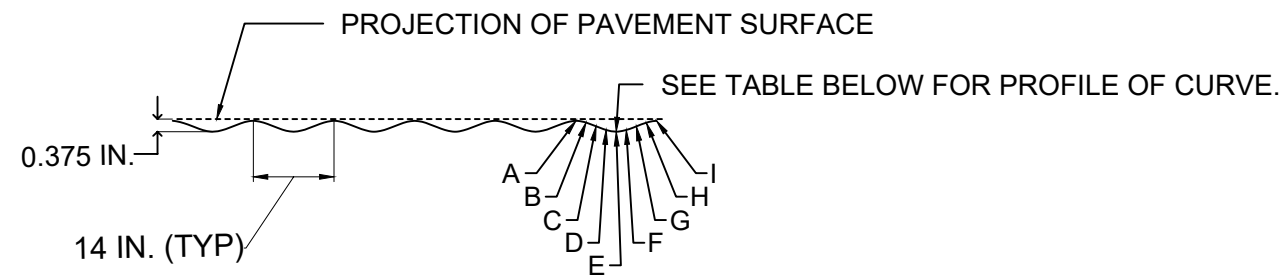


**TYPE C
CONTINUOUS SINUSOIDAL
RUMBLE STRIP**

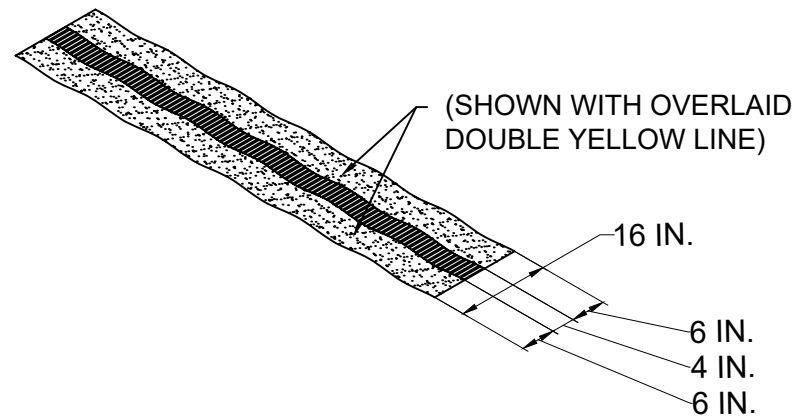
PLAN



ELEVATION

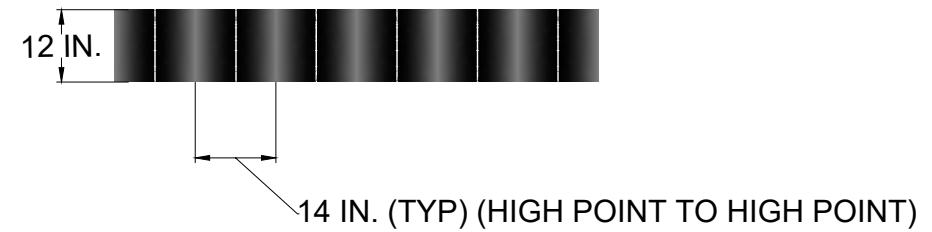


ISOMETRIC VIEW WITH OVERLAID
DOUBLE YELLOW LINE

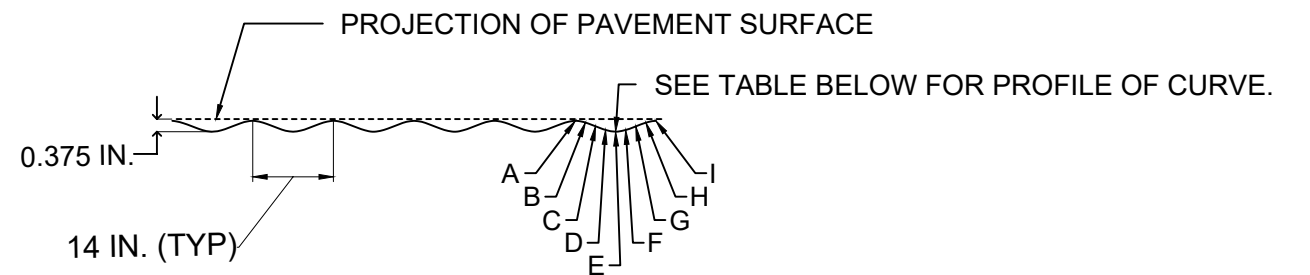


**TYPE D
CONTINUOUS SINUSOIDAL
RUMBLE STRIP**

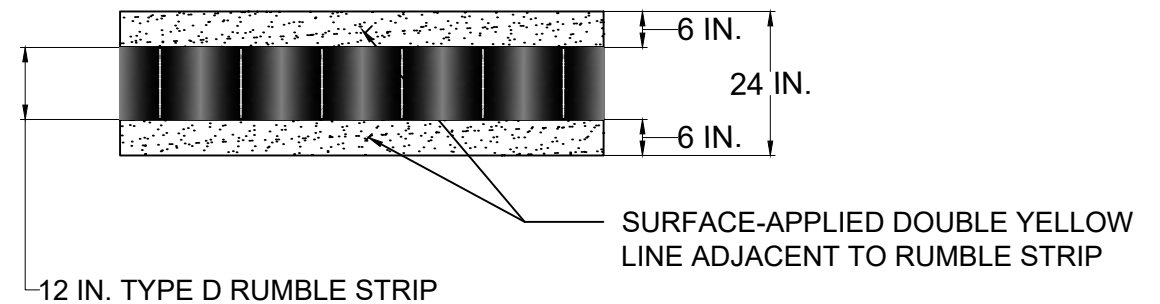
PLAN



ELEVATION



PLAN VIEW WITH ADJACENT
DOUBLE YELLOW LINE



NOTES:

1. NOT TO SCALE. SOME LINE WORK EXAGGERATED FOR CLARITY.
2. SEE PLANS FOR LOCATION(S) AND START AND END STATIONS FOR ALL RUMBLE STRIP INSTALLATIONS.
3. HIGH POINT OF SINUSOIDAL RUMBLE STRIP LOCATED $\frac{1}{16}$ IN. BELOW PAVEMENT SURFACE.

DESIGN OF CURVE PROFILE FOR SINUSOIDAL RUMBLE STRIP

POINT	A	B	C	D	E	F	G	H	I
DEPTH FROM PAVEMENT SURFACE (IN.)	$\frac{1}{16}$	$\frac{1}{8}$	$\frac{7}{32}$	$\frac{11}{32}$	$\frac{3}{8}$	$\frac{11}{32}$	$\frac{7}{32}$	$\frac{1}{8}$	$\frac{1}{16}$
DISTANCE FROM HIGH POINT "A" (IN.)	0	1.75	3.5	5.25	7	8.75	10.5	12.25	14